

Removing and installing window frame and window regulator



Note

Before removing the window frame / door you must disconnect the battery.

1 - Window frame



Caution

There is a side airbag sensor on the inside of the door -arrow-; observe the safety regulations for airbags → Rep. gr.69.

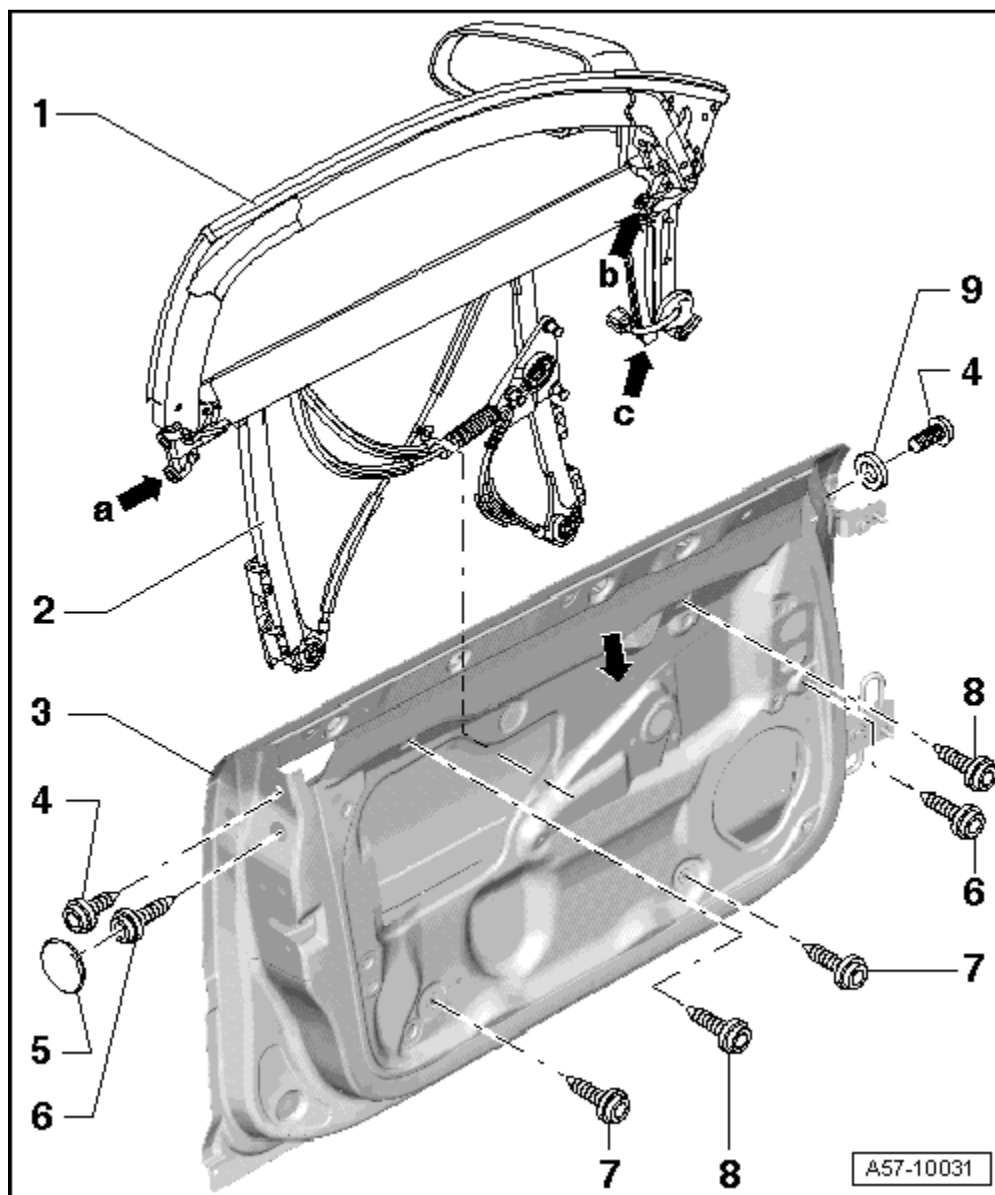
- ❑ Removing:
- ❑ Remove door trim. → Rep. gr.70
- ❑ Unplug electrical connectors.
- ❑ Remove window regulator motor → Fig.
- ❑ Unscrew bolts -4- and -6-.
- ❑ Unscrew bolts -7- and -8- and lift window frame with window regulator out of door.

- ❑ Installing:
- ❑ Before installing, move half of window glass into window frame.
- ❑ Insert window frame and window regulator into door from above.
- ❑ Attach upper half of seal (on door side) into window frame (top).



Note

Slacken off longitudinal adjuster screw -arrow a- (also → Fig.) to adjust window frame to door.



- ❑ Fit fitted bolts -4- loosely and hand-tighten.
- ❑ Set adjuster screw -arrow a- so that it makes contact with door (9 mm hexagon socket).
- ❑ Screw in bolt -6- (rear).
- ❑ Press top of window frame -1- slightly inwards.
- ❑ Tighten fitted bolts -4- to 32 Nm.
- ❑ Unscrew adjustment bolts for longitudinal direction -arrow c- and for the angle -arrow b- as far as they will go with an Allen key (width across flats: 9 mm).
- ❑ Tighten bolts -6- to 32 Nm.
- ❑ If longitudinal adjuster screw -arrow b- has been slackened, it must now be tightened to 32 Nm.
- ❑ Tighten lower bolts -7- for window regulator to 6 Nm.
- ❑ Tighten upper bolts -8- to 6 Nm.
- ❑ Check door adjustment with template -T40038/3- (on vehicles with 3 doors) or template -T40038/5- (on vehicles with 5 doors).



Note

- ◆ *When setting door angle, adjustment bush -arrow c- must only make contact with door panel.*
- ◆ *Do NOT adjust the window frame via the adjustment bush. The window frame must be pressed into the correct position before the adjustment bush makes contact with the inner door panel.*
- ◆ *Tighten all bolts in the specified sequence.*

2 - Window regulator

- ❑ Bolted to window frame for installation in door

3 - Front door

4 - Fitted bolt

- ❑ 32 Nm



Note

- ◆ *Height of window frame is already correctly set by fitted bolts -4-.*
- ◆ *However, should it be necessary to adjust the height of the window frame, replace the fitted bolts with standard bolts.*
- ◆ *This will enable you to adjust the height of the window frame.*

5 - Cap

6 - Torx bolt

- ❑ 32 Nm

7 - Flange bolt

- ❑ 6 Nm

8 - Torx bolt



Note

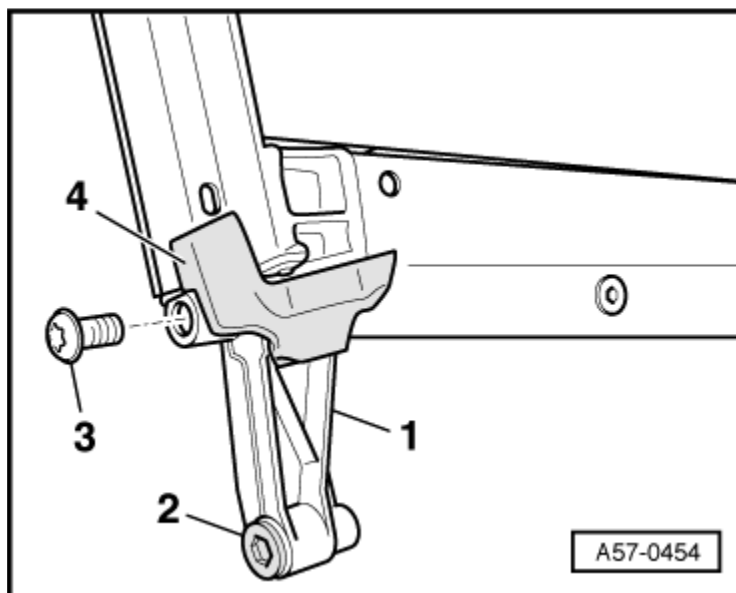
On vehicles with 3 doors there are 3 of these bolts at the top.

- ❑ 6 Nm

9 - Spacer

Adjuster screw for longitudinal direction

- After tightening fitted bolts, unscrew threaded sleeve -2- on window frame -1- using a 9 mm Allen key as far as it will go.
- Then tighten the appropriate flange bolt to 32 Nm.
- Self-adhesive seal -3-.



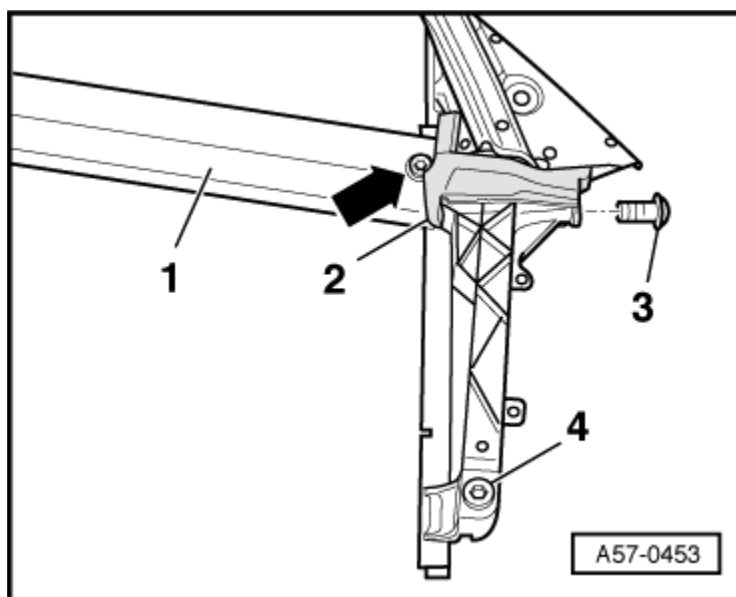
Screw for lateral adjustment

- Use adjustment bush -4- to make lateral adjustments and set the angle of the window frame.



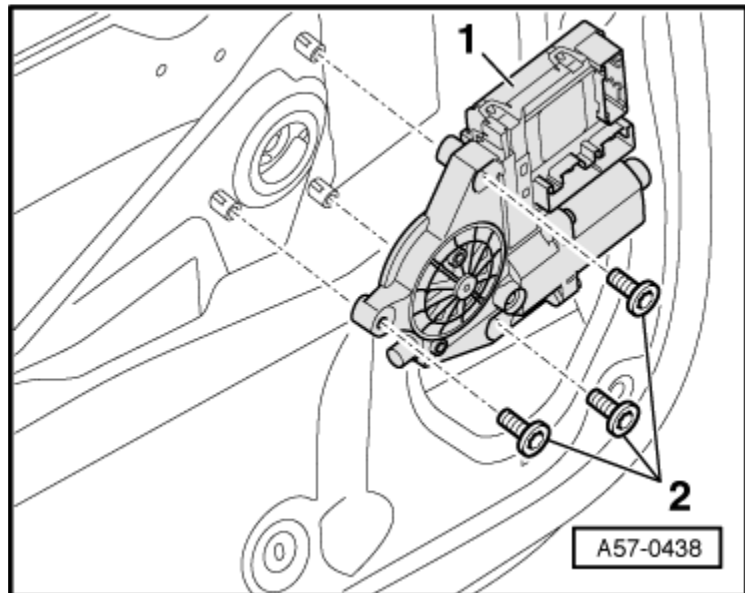
Note

- ♦ When setting the door angle, the adjustment bush -4- must only make contact with the door panel.
- ♦ Do NOT adjust the window frame via the adjustment bush. The window frame must be pressed into the correct position before the adjustment bush makes contact with the inner door panel.
- ♦ Tighten all bolts in the specified sequence and to the specified torque → **Chapter**.
- Use template -T40038/3- to check position of window frame -1-.
- Only slacken off longitudinal adjuster screw -2- if it is necessary for longitudinal adjustment of the window frame in the door.
- Self-adhesive seal -3-.



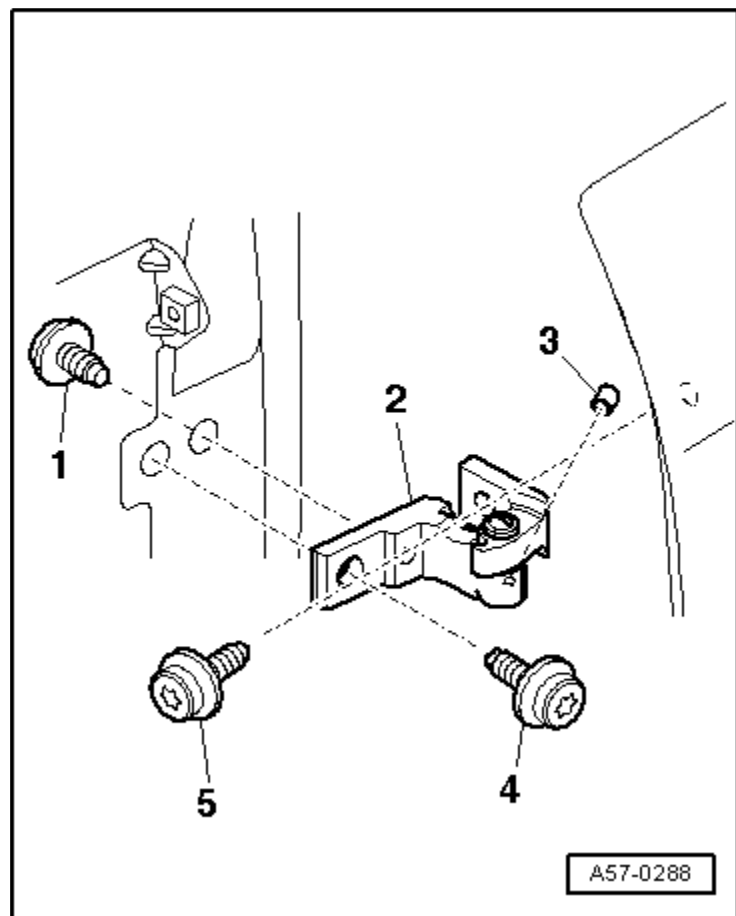
Removing and installing window regulator motor

- To remove, unscrew bolts -2- and detach window regulator motor -1-.
- Installing window regulator motor
→ [Chapter](#).



Door hinge (top)

- Torx bolt -T 45--1- (fitted from inside vehicle): 32 Nm
- Door hinge (top) -2-
- Cap -3-
- Torx bolt -T 45--4-: 32 Nm.
- Fitted bolt -5-Torx -T 45-: 32 Nm.



Door hinge (bottom)

- Torx bolt -T 45--1- (32 Nm) is secured to B-pillar from inside of vehicle.
- Door hinge (bottom) -2-
- Cap -3-
- Torx bolt -T 45--4-: 32 Nm.
- Fitted flange bolt Torx -T 45--5-: 32 Nm.
- Re-grease lubrication points -arrows- at prescribed service intervals.
- Front door -6-

